

S.E. 1/4
SECTION 26, T.6N., R.2W., S.L.B. & M.

IN WEST HAVEN CITY

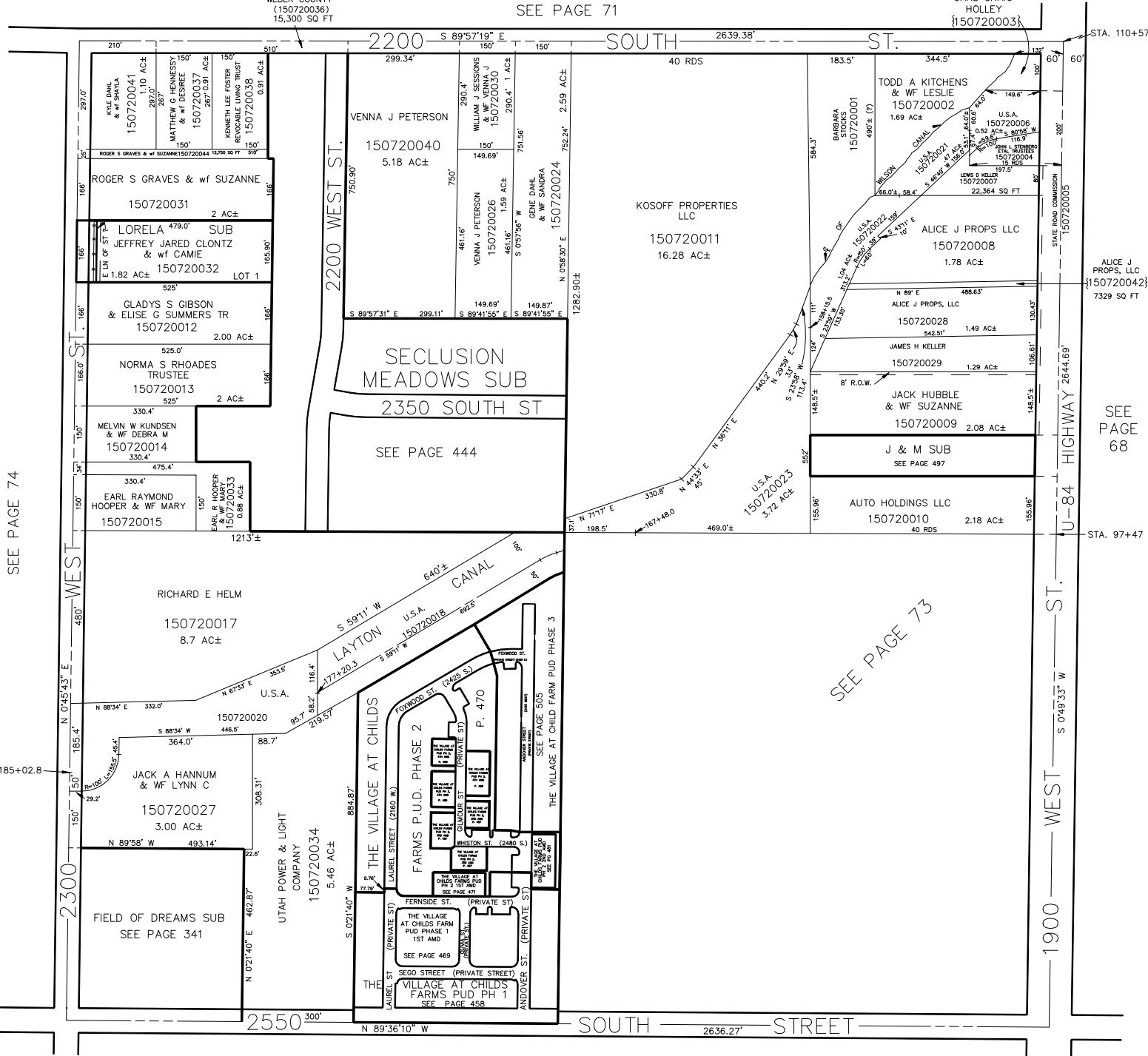
SCALE 1" = 200'

TAXING UNIT: 277

SEE PAGE 71

CARL CRAIG HOLLEY
150720003

WEBER COUNTY
(150720036)
15,300 SQ FT



SEE PAGE 74

SEE PAGE 73

STA. 185+02.8

STA. 110+57

STA. 97+47

SEE PAGE 94

SEE PAGE 95